





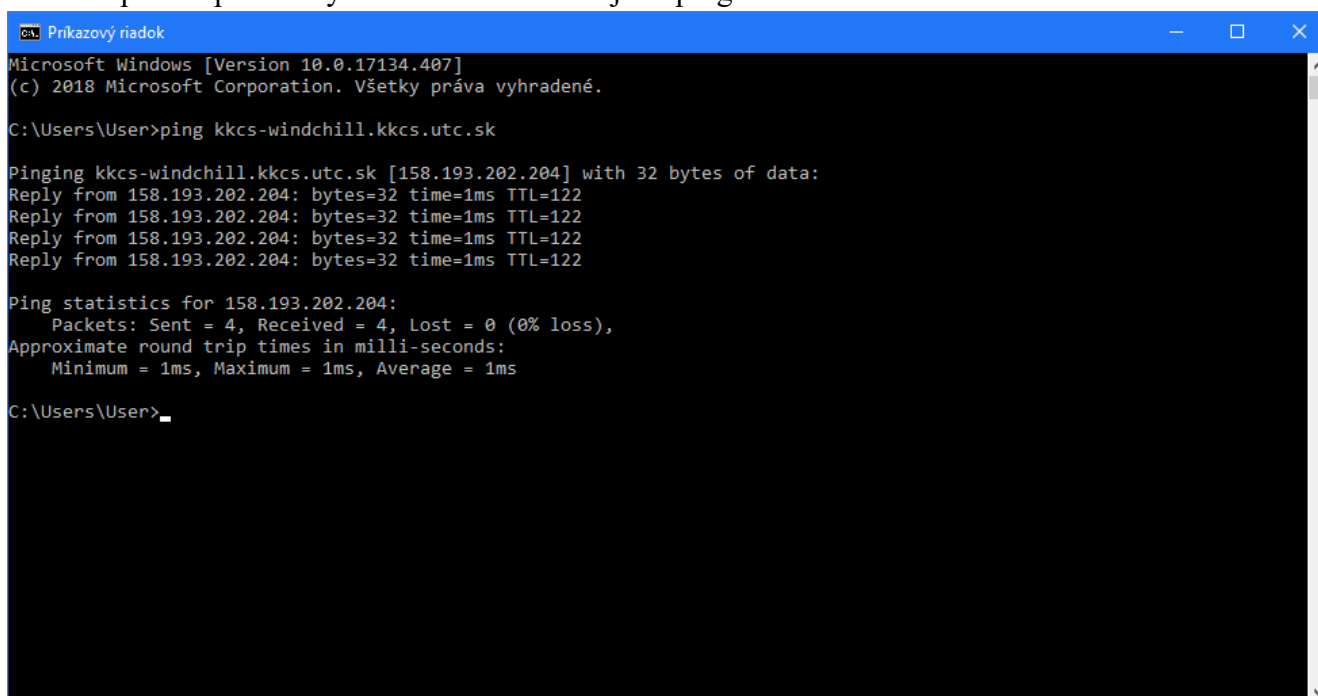


## Návod na inštaláciu PTC Creo - Windchill

1. Treba dopísať v súbore “hosts”: 158.193.202.204 kkcs-windchill.kkcs.utc.sk  
Priečinok sa nachádza v: C:\Windows\System32\drivers\etc

Názov	Dátum úpravy	Typ	Veľkosť
 hosts	2. 12. 2018 21:04	Súbor	2 kB
 hosts	28. 11. 2018 22:40	Súbor iCalendar	1 kB
 lmhosts.sam	12. 4. 2018 1:36	Súbor SAM	4 kB
 networks	22. 8. 2013 15:25	Súbor	1 kB
 protocol	22. 8. 2013 15:25	Súbor	2 kB
 services	22. 8. 2013 15:25	Súbor	18 kB

2. Spustíte príkazový riadok “cmd” a zadajte: “ping kkcs-windchill.kkcs.utc.sk”



```
Príkazový riadok
Microsoft Windows [Version 10.0.17134.407]
(c) 2018 Microsoft Corporation. Všetky práva vyhradené.

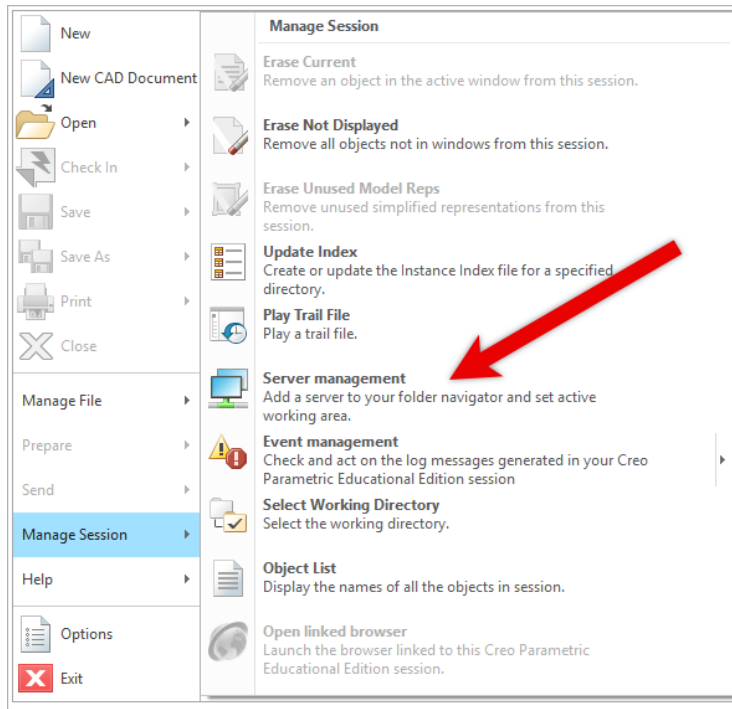
C:\Users\User>ping kkcs-windchill.kkcs.utc.sk

Pinging kkcs-windchill.kkcs.utc.sk [158.193.202.204] with 32 bytes of data:
Reply from 158.193.202.204: bytes=32 time=1ms TTL=122
Reply from 158.193.202.204: bytes=32 time=1ms TTL=122
Reply from 158.193.202.204: bytes=32 time=1ms TTL=122
Reply from 158.193.202.204: bytes=32 time=1ms TTL=122

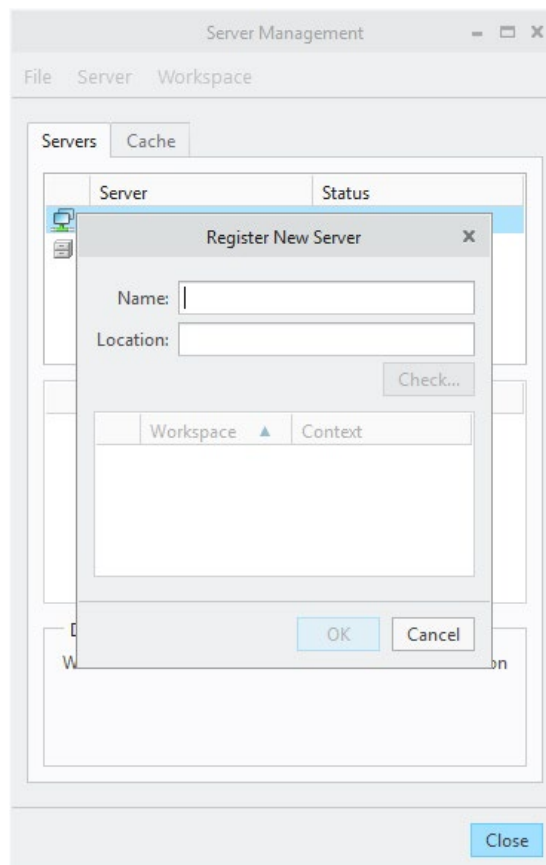
Ping statistics for 158.193.202.204:
    Packets: Sent = 4, Received = 4, Lost = 0 (0% loss),
    Approximate round trip times in milli-seconds:
        Minimum = 1ms, Maximum = 1ms, Average = 1ms

C:\Users\User>
```

3. Pokiaľ všetko prebehlo v poriadku spustíte PTC Creo a otvorte okno “Server Management” a zadajte “Register New Server”



4. V prihlasovacom okne servera zadajte ľubovoľné “Name” a do položky “Location” zadajte odkaz: [kkcs-windchill.kkcs.utc.sk/Windchill](http://kkcs-windchill.kkcs.utc.sk/Windchill)



5. Zvoľte “Check”, zadajte svoje prihlasovacie meno a heslo a všetko by malo fungovať.

